



PIPELINE

PIPING SYSTEMS INS

PROCESS PIPING • PLUMBING • HVACR • BOILERS • FIRE PROTECTION SYSTEMS • ELECTRICAL • SPRINKLERS INSPECTIONS **SUMMER 2024**

Collaborative Excellence: PSI Joins Forces with Environmental Systems on Innovative Refrigeration Project

When plans for the new construction of **Briarwood Retirement Community** in Worcester were finalized, **Environmental Systems**, one of Massachusetts's largest mechanical contractors, chose PSI to complete the innovative refrigeration installation. At the time, it was PSI's largest refrigeration install in the company's history and still stands as a testament to the company's expertise in handling large-scale construction challenges and tight deadlines.

Project Overview

Briarwood Retirement Community is a sprawling campus that offers a

spectrum of care, including townhouses and skilled nursing facilities. The project was part of a new construction, wood-built, three-story assisted living and skilled nursing home. The building included a parking garage and two wings, encompassing approximately 86 units, each equipped with heating, air conditioning, and a Variable Refrigerant Flow (VRF) system. The project required an impressive 2,600 man-hours.

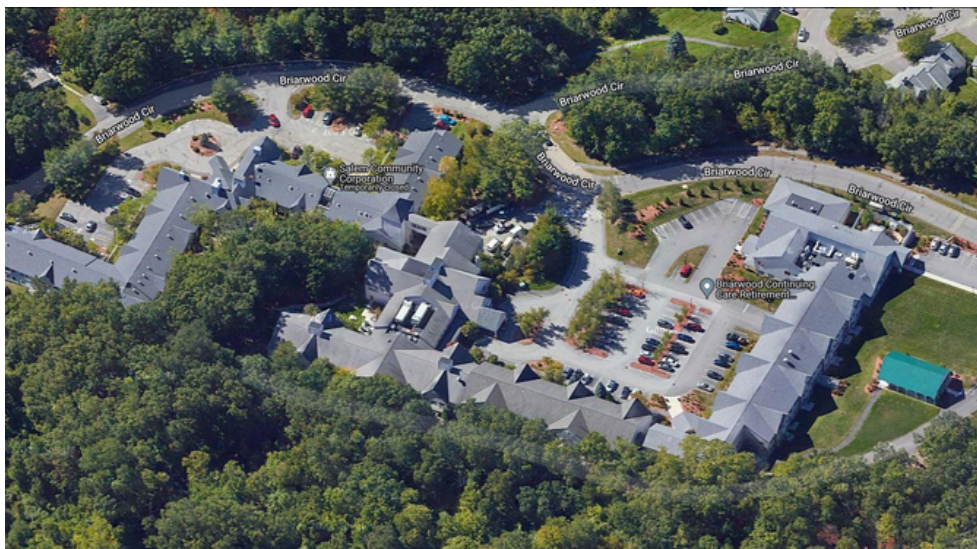
Constraints and Challenges

The refrigeration project's tight schedule posed a significant

challenge, particularly because the units were ceiling-mounted, requiring precise coordination with the sheet metal and sheetrock contractors. The team had a limited window to install and test the piping in each unit, necessitating seamless collaboration between multiple parties. Despite these constraints, the project progressed smoothly from May through the end of the year, with four to six technicians on-site at any given time.

Innovative Features

One unique aspect of this project was the environmentally friendly use of condensate. The team engineered a system to channel condensate through the building, exiting into the parking garage, and ultimately being utilized to water the gardens surrounding the perimeter of the building. This innovative approach was approved by Worcester's city's codes and demonstrates PSI's accommodation of the facility's sustainability request.



continued on page 4



32 Mill Street (Rt. 79) • P.O. Box 409
Assonet, MA 02702 •
PSI@PipingSystemsIns.com
tel: 508/644-2221 • fax: 508/644-2447

Scan this QR Code with your
smartphone to easily find us online
www.PipingSystemsIns.com



Take This Father's Day Trivia Quiz

1. What is the average age of first-time fathers in America?
2. Who is the "Founding Father" of the United States?
3. Father's Day is the fourth largest holiday for sending greeting cards, according to Hallmark. What 3 holidays are ahead of it?
4. This is often one of the first "words" babies say.
5. 64% of dads do not want anything that says **this** on it for Father's Day.
6. Which marine animal father is the one that becomes pregnant and gives birth to its offspring?
7. Which type of fish father will keep the eggs of his children in his mouth until they hatch?
8. This animal dad guards his pups and also brings them and the mother food.
9. This U.S. President issued the first proclamation recognizing Father's Day in 1966.
10. Which U.S. President made Father's Day a permanent federal holiday in 1972?
11. What year did the first Father's Day celebration take place?

A. 1900 B. 1910 C. 1920 D. 1945

Answers:
1. 30.9 years
2. George Washington
3. Mother's Day, Valentine's Day, and Christmas
4. Dada
5. World's Best Dad
6. The seahorse
7. Catfish
8. The wolf
9. Lyndon B. Johnson
10. Richard Nixon
11. B-June 19, 1910

Employee Spotlight: Chace Duarte, Welder



In very short order, Chace Duarte went from being a Diman Regional Voc-Tech student, to being part of PSI's co-op program, to being hired as a full-time welder--all while practicing, practicing, practicing to compete in the national arena as a challenger for the prestigious WorldSkills 2024 Welding Trials.

From the outset, Duarte's dedication and passion for welding were evident.

Mentored in class by Mr. David Salsinha, a seasoned veteran in Diman's welding program, Duarte honed his skills with unwavering commitment and humility. Despite his rising success, Duarte remained grounded, earning praise not only for his talent but also for his character and work ethic.

Duarte's path to the WorldSkills competition was paved with hard work and perseverance. Since his sophomore year, Chace has balanced a full-time job at PSI with night classes, working toward his pipefitting license. He dedicates every spare moment to perfecting his craft. So let's lift up the welder's helmet to hear a bit about Chace from the man himself!



Chace, what inspired you to pursue a career in welding?

Initially, I didn't plan on becoming a welder. I aimed to be an electrician, but during my time at Diman Regional Voc-Tech, I stumbled upon welding in the metal fab shop. The sparks, lights, and artistry of welding fascinated me, prompting me to explore it further.

How did you end up working at PSI?

My teacher recommended PSI to me. After a tour and experiencing the community here, I was drawn to the opportunity. Growing up in a blue-collar environment with my dad as a machine operator also influenced my decision. Additionally, seeing skilled welders like Cody excel in their craft inspired me to pursue welding seriously.

Can you share your experiences with skills competitions and how they influenced your interest in welding?

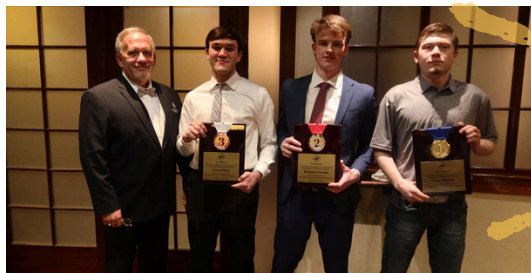
Participating in skills competitions, starting from district tests to eventually competing internationally, was a pivotal experience. The rigorous standards of precision demanded in these competitions pushed me to improve continually and fueled my passion for welding.

What advice would you offer to those aspiring to pursue welding as a career?

I would advise aspiring welders to meticulously critique their work and learn from each mistake to enhance their skills. It's essential to persevere through challenges, as every weld presents an opportunity for improvement.

Apart from welding, what are your interests and hobbies?

Outside of welding, I enjoy fixing cars and cooking.



**Congratulations,
Chace,
for winning
3rd Place!!
PSI is proud of your
accomplishment!**

End of an Era: Fruit Stripe Gum Bids Farewell

For many older millennials, memories of childhood are intertwined with the vibrant flavors of Fruit Stripe gum and its iconic zebra mascot. However, the news has arrived that this beloved chewing gum is being discontinued by its manufacturer, Ferrara Candy.

In a statement, Ferrara Candy cited various factors, including consumer preferences and purchasing patterns, leading to the difficult decision to discontinue Fruit Stripe Gum. While some enthusiasts had noticed its dwindling presence on store shelves, the official announcement has now confirmed its departure.

The history of Fruit Stripe traces back to the late 1960s when it was invented by James Parker and initially sold by Beech-Nut Confection Division. Over the years, it changed hands through mergers and acquisitions until it became part of the Ferrara Candy Company.

Despite its discontinuation, Fruit Stripe had enjoyed enduring popularity, with sales increasing in recent years. The introduction of Fruit Stripe gummy candies and the memorable zebra mascot, Yipes, further solidified its place in pop culture.

Con't in next column >



Services Americans Tip For – and How Much

When it comes to tipping, Americans' decisions vary depending on the situation. A recent study delved into the tipping habits across different scenarios commonly encountered in daily life. At sit-down restaurants where servers take orders, a whopping 92% of Americans reported always or often leaving a tip.

Haircuts and food delivery also saw high tipping rates, with around 78% and 76% of individuals tipping, respectively. Even at bars, where drinks are purchased, approximately 70% of patrons left a tip. However, tipping was notably less common at coffee shops and fast-casual restaurants, with only 25% and 12% of customers tipping, respectively.

Demographic factors influenced tipping behavior to some extent. Generally, higher-income individuals were more likely to tip across various services. However, those with lower incomes were most likely to tip at fast-casual restaurants. Similarly, individuals with at least a bachelor's degree tended to tip more consistently across most scenarios.

Regarding the amount tipped for a sit-down meal, a majority of respondents (57%) indicated they would tip 15% or less for average service. Notably, those with higher incomes were inclined to leave larger tips compared to middle- and lower-income earners. Interestingly, older adults were slightly more conservative with their tipping, with a higher percentage opting for a 15% tip compared to younger adults.

Understanding tipping habits provides insights into societal norms and expectations surrounding service industries, shedding light on how individuals navigate these interactions.

Source: Pew Research Center



While the end of Fruit Stripe Gum marks the conclusion of an era for many, fond memories of its bold flavors and whimsical mascot will remain. As fans bid farewell to this nostalgic treat, they can only hope that Yipes, too, finds a happy retirement away from the limelight.

Source: www.foodandwine.com

"We have made the difficult decision to sunset Fruit Stripe Gum, but consumers may still be able to find the product at select retailers nationwide."

– Ferrara Candy Representative

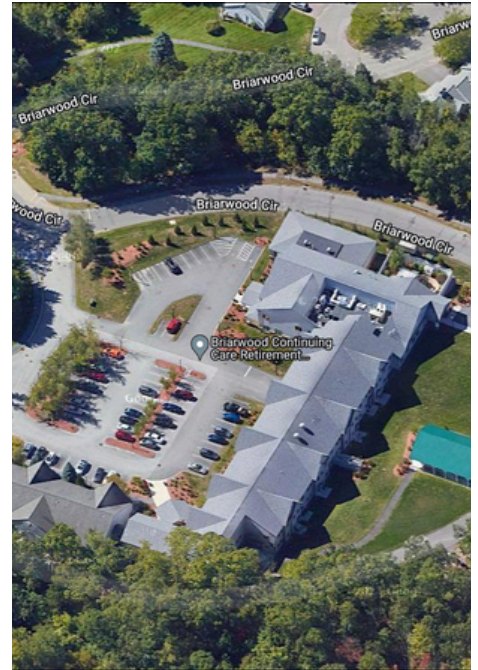
Collaborative Excellence: PSI...

Certifications and Skills Required

The complexity of the project demanded a highly skilled and certified team. Field technicians held refrigeration technician licenses or EPA Certifications, and Massachusetts pipe fitters were also on-site to install the condensate line. This level of expertise ensured the project's success and compliance with industry standards.

Collaboration with General Contractors

PSI's synergy with Environmental Systems spans more than 20 years and has been a collaboration built on mutual trust and respect, with a shared goal of completing projects efficiently and within budget. The Briarwood Retirement Community's refrigeration installation highlights PSI's capability to manage complex construction projects, master environmental considerations, and work in parallel with other contractors.



Discover the Fascinating Story Behind America's Beloved Junk Foods

Join us on an intriguing journey through the rise and fall of some of America's most iconic junk foods in Insider Business's latest video, "**The Rise And Fall Of America's Favorite Junk Foods.**" Delve into the captivating history of household staples like Kraft cheese, Jell-O, and Twinkies as we uncover how these brands became cultural icons and nearly faced extinction. Don't miss out on this insightful exploration of the captivating tales behind these beloved treats. Watch the full video now for an intriguing glimpse into the world of American food culture!



32 Mill Street (Rt. 79) • P.O. Box 409
Assonet, MA 02702 •
PSI@PipingSystemsIns.com
tel: 508/644-2221 • fax: 508/644-2447

Scan this QR Code with your
smartphone to easily find us online
www.PipingSystemsIns.com

